

REGISTRATION FORM, Danube cruise and Czech Republic. May 10, 2012

Name (As on passport) _____

Address _____

City _____ Postal code _____ e mail _____

Phone: home _____ Work _____

Date of Birth _____ Smoker ___ Non smoker ___ Occupation _____
 (day) (month) (year)

Single room? ___ Double room? ___ Twin room ___ Name of room mate _____
 (Roomate must also submit a registration form.)

Please describe any dietary or relevant medical concern: _____

Aeroplan number: _____

Emrg. Contact _____

Address _____ Postal code _____

Phone _____ e mail _____

I agree to the terms and conditions of the tour program. I certify that I am aware that this tour requires me to be in good health and that I will not require personal assistance.

Signed _____ Date _____

A refundable registration fee in the amount of \$50.00 per person is required to secure a place. When 2012 airfare has been confirmed in June 2011 we will guarantee the price and a further NON- Refundable deposit of \$550.00 will be due. If in June we are faced with a fare increase you will have the option of cancelling and will receive a refund of the registration fee. Final payment will be due 12 March, 2012.

Amount enclosed _____

Please make payment (By cheque, or credit card) to: Elan Travel

How did you learn of this tour? _____

Elan Travel.
 4553, Lakelse Avenue, Terrace, B.C. V8G 1P7
 Tel. 250 635 2281 1 800 772 6394 Fax 250 635 7695
 E mail g.clark@elan-travel.com
www.elantravel.ca



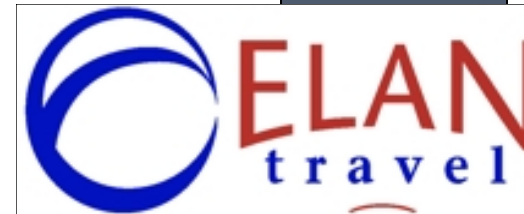
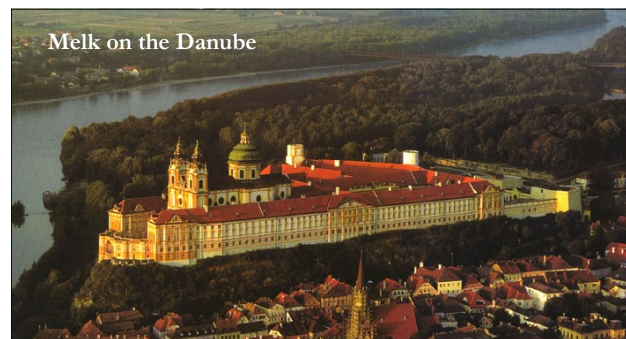
TERMS AND CONDITIONS:

Maximum group size is 26. If we do not reach the minimum number of participants required (10) to operate, the tour will be cancelled and a full refund will be made. Elan Tours reserves the right to change the tour or amend the itinerary. Program changes may be deemed necessary prior to, or after departure. Elan Tours will make every effort not to defer additional costs incurred but reserves the right to do so..

Elan Tours reserves the right to cancel any individual's membership in the program if Elan Tours deems such action is in the best interest of the group.

Elan Tours will not be responsible for any loss, damage, injury, delay, expense or inconvenience occasioned by acts of God, errors or omissions by their agents and suppliers, or any cause or event beyond its control. The passenger contract in use by each airline concerned, when issued, shall constitute the sole contract between each airline and the group members. No transportation company supplying services to the group shall have or incur any responsibility for liability to any traveler aside from their liability as common carriers.

This tour is suitable for people of all ages and fitness levels but please bear in mind that a certain amount of walking is required to enjoy some of the cities and sites we will visit.



Danube River Cruise and Czech Republic tour. 10 May 2012

**From Vancouver, Can. \$5,860.00
 (Cruise and tour only \$4,460.00)**

Featuring 7 day river Danube,
 Cruise including 6 shore

Excursions & wine with dinner

Plus an 8 day bus tour.

Vienna (3 nts.), Cesky Krumlov (1nt.) Rothenburg (1nt.) Prague (3 nts.)

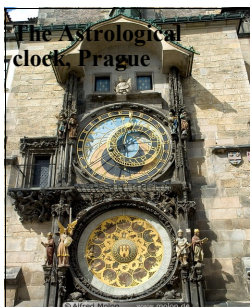
Includes: Airfare, hotel accommodations, outside cabin, all meals (except 2 lunches on free days), sightseeing, And ALL taxes & airlines fees!

ESCORTED BY VIV STEELE

ITINERARY

MAY, 2012

- Thu. 10 Depart Vancouver with Lufthansa for Vienna via Frankfurt
- Fri. 11 Arrive Vienna, rest of day free. Optional afternoon tour to Shoenbrunn Palace with Mozart/ Strauss concert (Approx. cost \$95.00)
- Sat. 12 Full day sightseeing in Vienna.
- Sun. 13 Free day to enjoy Vienna.
- Mon.14 Morning departure drive to Cesky Krumlov in the Czech Republic, afternoon sightseeing and O/N in Cesky Krumlov..
- Tue. 15 Mid morning drive to Prague, with lunch stop in Pilsen and visit to the Beer Museum located in the 15th century brewery where Pilsener beer was invented.
- Wed. 16 Full day sightseeing in Prague. Evening river dinner cruise.
- Thu. 17 Free day in Prague (No lunch provided)
- Fri. 18 A.M departure for Rothenburg ob der Tauber, lunch en route. O/N Rothenburg.
- Sat. 19 A.M sightseeing in Rothenburg and drive to Nuremberg after lunch. Embark. O/N on board our ship.
- Sun. 20 Sightseeing in Nuremberg before setting sail on the Main-Danube canal
- Mon. 21 Visit the medieval city of Regensburg,.
- Tue. 22 Deggendorf, horse-drawn carriage ride in the forest, glass workshop and glass museum visit.
- Wed. 23 Passau, beautiful baroque town, the Cathedral contains Europe's largest pipe organ.
- Thu. 24 Cruise the Wachau Valley, perhaps Europe's most beautiful. Stop at Melk to visit the 900 year old baroque abbey. Situated on granite cliffs above the Danube. Evening, dock in Vienna O/N on the ship.
- Fri. 25 Free day in Vienna and O/N on the ship.
- Sat. 26 Early morning transfer to the airport for our flight home. Arrive Vancouver on the 26th.



Highlights

Vienna: One of Europe's most beautiful cities, full of grand buildings and palaces and truly a city of music: Mozart, Beethoven, Schubert and the Strauss family all composed here. While a major capital Vienna has a relaxed unhurried atmosphere.

Cesky Krumlov: The 12th century castle has been wonderfully restored. You enter the castle by crossing the bear moat, bears are still kept in! Inside is a wonderful collection of tapestries and paintings. The town below is a warren of cobble stoned streets and alleys which are closed to traffic.

Pilsen: 400 years ago a group of locals formed a beer-drinking guild. The guild was responsible for developing Pilsener beer. The beer museum here is located in the 15th c. malt house.

Prague: "Old" Prague is by far the most complete medieval city in Europe. It is often referred to as a fairy tale city, because of its many spires. The city is dominated by Prague Castle, one of Europe's largest. Great shopping here; Bohemian Crystal and amber jewelry being particularly good buys.

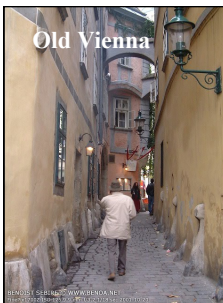
Nuremberg: Ancient city which has managed to retain many of its historic palaces and churches. Home, of course, of the infamous Nazi War Crimes trials.

Rothenburg: Most famous and most beautiful of the Medieval cities found along Germany's famous Romantic Road.

Regensburg: A 12th century town quickly became a hugely wealthy trading centre when the first bridge to span the Danube was built here. 900 years later the massive stone Steinerne Brücke is still in use. and

Passau: Situated at the confluence of the Danube, Inn and Ilz rivers, the city is rich in 16th and 17th century architecture. But it is the surrounding scenery that makes Passau such a Mecca for tourists

Melk, Wachau Valley: Regarded as Europe's most beautiful river valley, the gem at the centre of the Wachau Valley is Melk a small town that winds up the granite cliffs to the enormous baroque Benedictine monastery.



Your tour price includes:

- Return airfare from Vancouver, with Lufthansa
 - Outside cat. 4 or 5 cabin
 - All meals (Except 2 lunches on our free time days)
 - 6 shore excursions, with English speaking guides
 - Centrally located hotel accommodation
 - Touring by comfortable A/C bus
 - Canadian escort plus English speaking guide
 - Admissions to all sites and attractions
 - Wine with dinner on the cruise
 - All taxes and airport fees
- Tips not included.

Facilities on the River Princess:

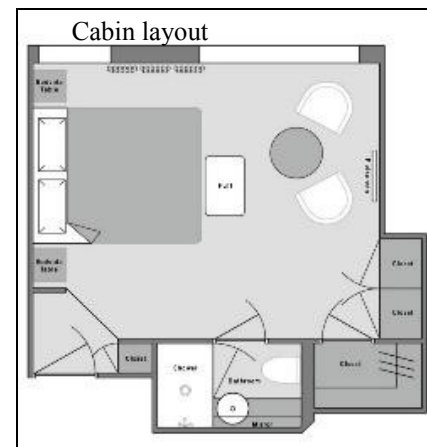
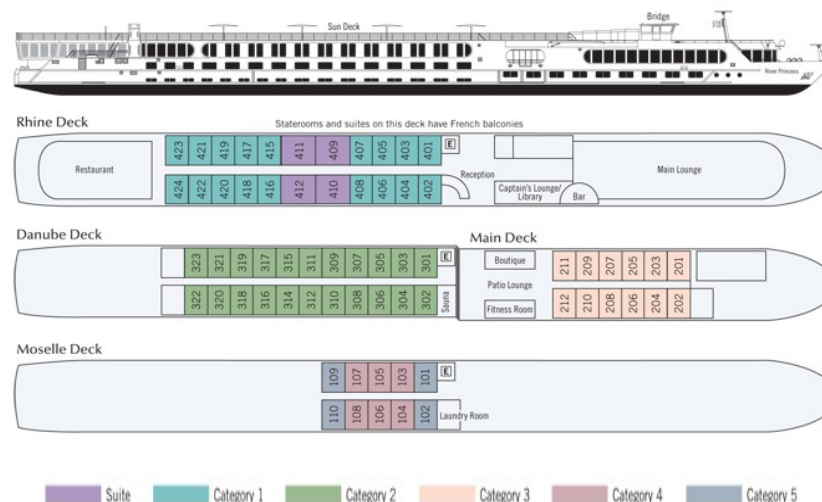
The ship was totally renovated in 2010.

Staterooms and suites have hotel-style beds draped in fine linens. The staterooms and suites on the Rhine Deck have French balconies. Other amenities include: a vanity, generous built-in closets, hair dryer, safe, individual thermostat for air conditioning and heat, direct-dial telephone, flat-screen satellite TV, bottled water, and bathroom with L'Occitane bath and body products, magnifying mirror, and plush bathrobes.

The suites have extra amenities and services including: slippers, coffee machine, bottle of wine upon arrival, fruit and cookie plate, morning coffee, and shoe shine, free laundry services and daily newspaper.

Beautiful panoramic main lounge with full-service bar, cozy Captain's Lounge and library, elegant restaurant, sun deck with chess and shuffleboard, sky lounge, fitness room, sauna, massage treatments, gift boutique, guest laundry and ironing facilities, and elevator. **Complimentary fine wines, beer and soft drinks with dinner.** Bottled water provided in every cabin.

Complimentary 24-hour specialty coffee and tea bar, and use of bicycles and Nordic walking sticks; 24-hour reception service; wireless Internet access in public areas



The price of \$5,860.00 Includes a cat. 4 or 5 cabin. The cabins are 151 sq. ft and have identical facilities (Except the suites of course which are 214 sq. ft.) You can pay a supplement to upgrade your cabin, the benefit is that the more expensive cabins are on a higher deck and have larger windows. **THERE ARE ONLY TEN CAT. 4 CABINS THEY WILL BE ALLOCATED BY THE CRUISE COMPANY ON A FIRST COME FIRST SERVED BASIS.**

SUPPLEMENTS:

| | | |
|--------|-----------|------------|
| Cat. 3 | \$338.00 | per person |
| Cat. 2 | \$537.00 | per person |
| Cat. 1 | \$788.00 | per person |
| Suite | \$1207.00 | per person |

- Moselle deck windows are 6 x 1.4 ft.
- Danube deck windows are 6.4x 3 ft.